

EU Exchange of Experts, Tyrol Lienz and Jönköping

Which topics were covered on AUT visit to SWE?

Joint risk group in Jönköping

Benefits of exchange

Fredric Jonsson, Head of section, Jönköping

Safety and security



**Accident prevention and
Fire/Rescue Service**



**Crisis
management
and
Contingency
planning**



Crime prevention



Security

How we work

- Prevent, prepare and respond
- The citizens need for safety and security should be in focus
- Systematic approach
- Cooperation between different disciplines and areas of competence
- Coordination responsibility lies on the Fire and Rescue Authority

Joint risk group

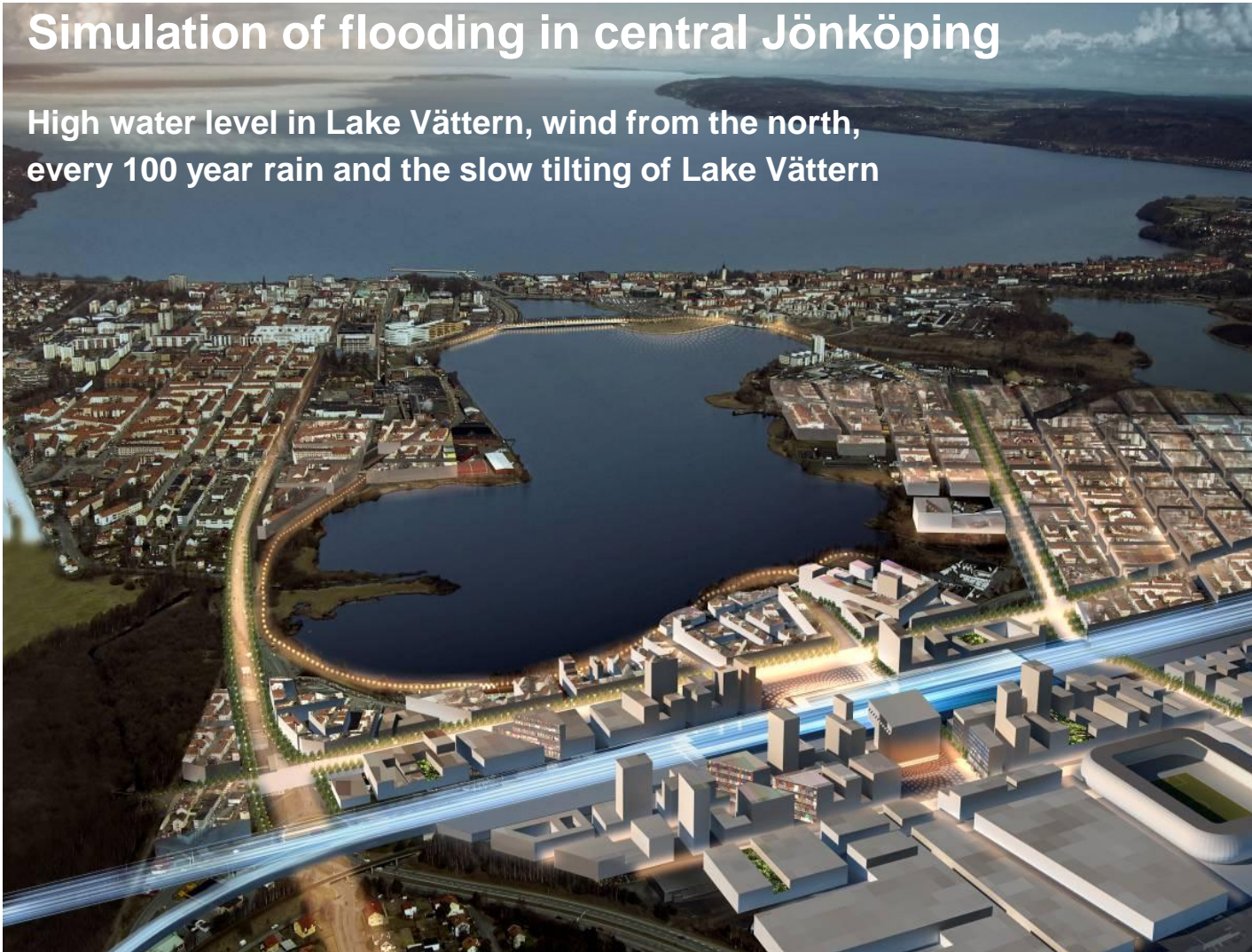
- Staffing depends on topic
- City planning office, Technical Department, Fire and Rescue Service and Environmental department always present
- Fire and Rescue Service coordinates
- Regional board expertise often present
- Those are the people involved in the exchange as well

Major risks assessed in Jönköping

- Weather related event (**flooding**, land slides, **debris flows** etc)
- Electrical power failure
- Telecommunication network failure
- Information system failure
- Major fire
- Disruption in fresh water distribution

Simulation of flooding in central Jönköping

High water level in Lake Vättern, wind from the north, every 100 year rain and the slow tilting of Lake Vättern



FUNKTIONEN FÖR TRYGGHET OCH SÄKERHET

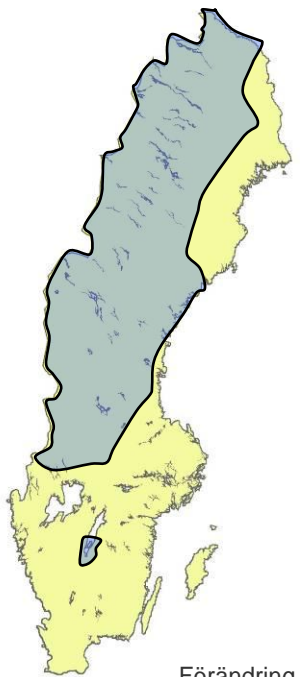
Calculated water levels in the inner city



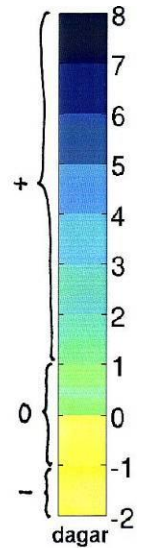
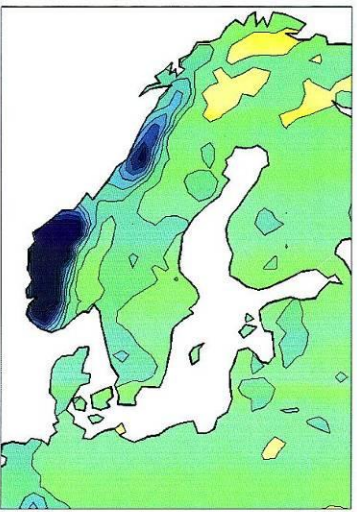
Change in probability for moraine landslides and mud flows due to change in seasonal precipitation and intense rainfall



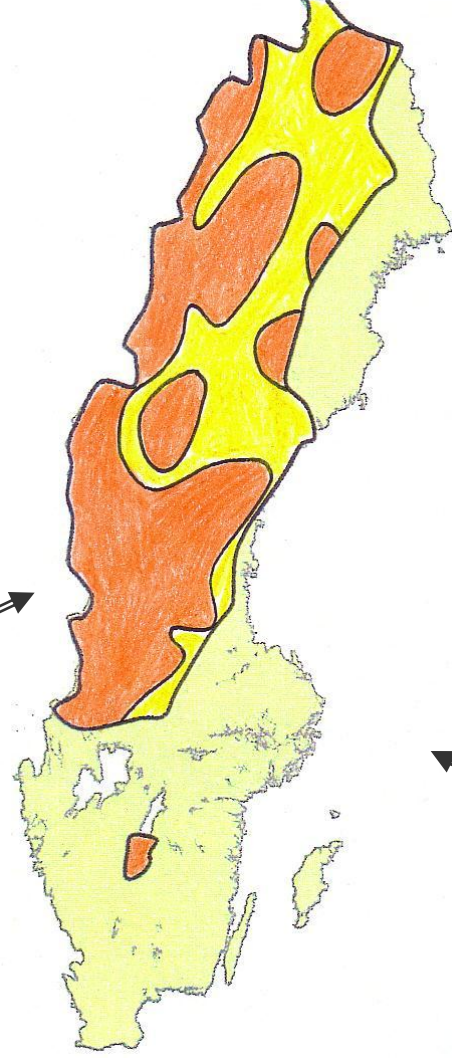
Underlagskarta –
Förekomsterna av
topografiska
förutsättningar för
moränskred och
slamströmmar



Förändring i intensiva
regn (Echam A2)



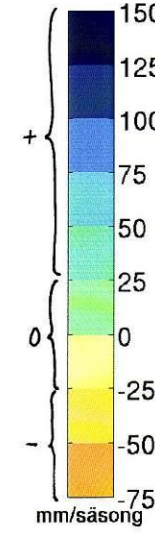
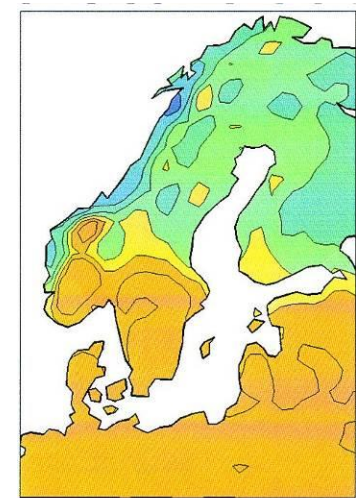
Vikt: x3



Resultatkarta: Förändring av benägenheten för
moränskred och slamströmmar

För: Klimat- och sårbarhetsutredningen (2007)
Utförd av: SGI, MSB, SMHI, SGU och Vägverket

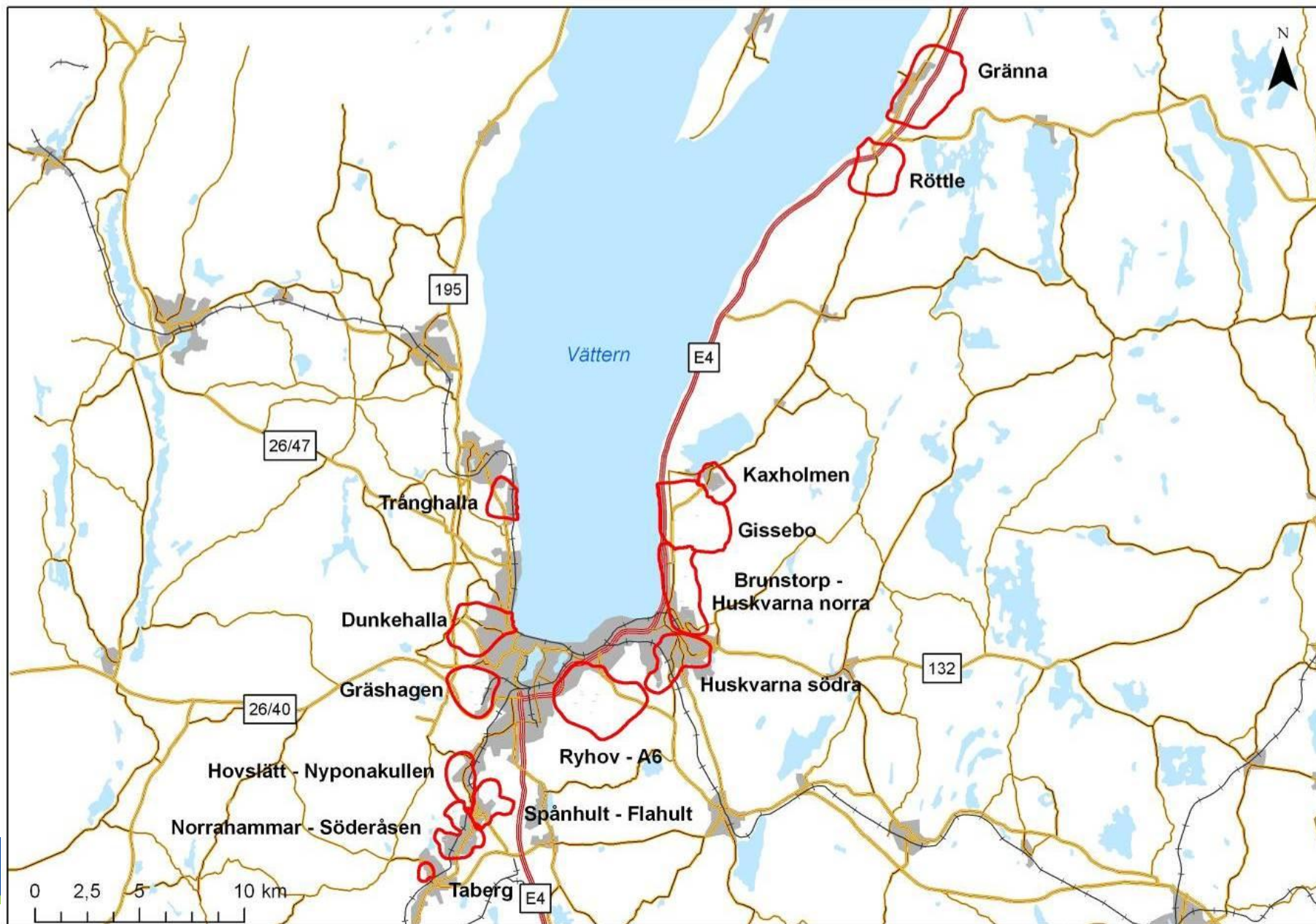
Nederbördsförändring under sommarsäsongen
(Echam A2) fram till perioden 2071-2100



Vikt: x1

Jönköpings kommun

Areas with risk of land slide and debris flows



Benefits of the exchange with Tyrol

- Methods of risk assessment on the local level
- Tyrol/AlpS Risk Analysis Model
- Expertise on debris flows and flooding
- Insight into unusual risks for Jönköping gives perspectives and knowledge
- Informal setting and lots of synergies
- Fantastic people and hospitality in Tyrol!